

Leaf Diseases



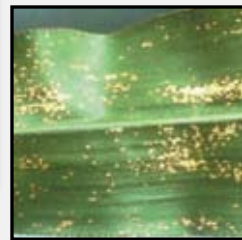
Anthraxnose Leaf Blight (Stages I, III)



Stewart's Bacterial Leaf Blight (Stages I, III)



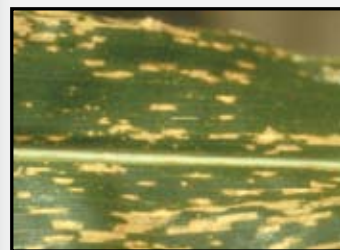
Gray Leaf Spot (Stage III)



Eyespot (Stages I, III)



Goss's Wilt (Stages I, III)



Southern Corn Leaf Blight (Stages II, III)



Northern Corn Leaf Blight (Stages II, III)



Physoderma Brown Spot (Stages I, III)



Common Rust (Stages II, III)



Southern Rust (surface) (Stages II, III)



Southern Rust (back) (Stages II, III)

Scouting for Corn Diseases

Stage I Emergence to knee-high	Stage II Knee-high to tasseling	Stage III Tasseling to maturity
Seedling Blights*		
Anthraxnose Leaf Blight, Bacterial Wilt and Bacterial Leaf Blight (Stewart's Wilt, Stewart's Disease), Goss's Wilt, Physoderma Brown Spot, Common Smut, High Plains Virus		
	Northern Leaf Blight, Southern Leaf Blight, Common Rust, Southern Rust, Crazy Top, Sorghum Downy Mildew*, Anthracnose Top Dieback & Stalk Rot, Bacterial Stalk Rot*, Pythium Stalk Rot*, Maize Chlorotic Dwarf Virus, Maize Dwarf Mosaic Virus, Corn Lethal Necrosis	
		All Ear & Kernel Rots
		Gray Leaf Spot, Head Smut*, Charcoal Rot, Diplodia Stalk Rot, Fusarium Stalk Rot, Gibberella Stalk Rot, Red Root Rot

Ear Rots



Diplodia Ear Rot (Stage III)



Aspergillus Ear Rot (Stage III)

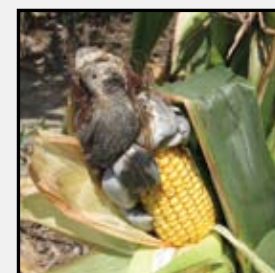


Fusarium Ear Rot (Stage III)



Gibberella Ear Rot (Stage III)

Smutting/Virus /Fungal Systemic Diseases



Common Corn Smut (Stages I, II, III)



High Plains Virus (Stages I, II, III)



Corn Lethal Necrosis (Stages II, III)



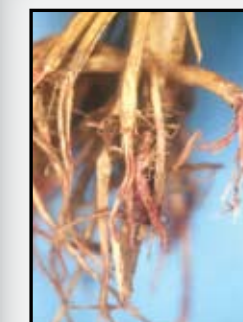
Maize Chlorotic Dwarf Virus (Stages II, III)



Maize Dwarf Mosaic Virus (Stages II, III)



Crazy Top (Stages II, III)



Red Root Rot (Stage III)



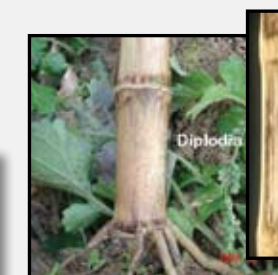
Gibberella Stalk Rot (Stage III)



Anthracnose Stalk Rot (Stages II, III)



Charcoal Rot (Stage III)



Diplodia Stalk Rot (Stage III)



Fusarium Stalk Rot (Stage III)

Stalk & Root Rots

* Image unavailable

Individual results may vary, and performance may vary from location to location and from year to year. This result may not be an indicator of results you may obtain as local growing, soil and weather conditions may vary. Growers should evaluate data from multiple locations and years whenever possible. ALWAYS READ AND FOLLOW PESTICIDE LABEL DIRECTIONS. Technology Development by Monsanto and Design(SM) is a servicemark of Monsanto Technology LLC. ©2010 Monsanto Company. SMK030110