

Corn

INSECT CALENDAR



Seedcorn Maggot

Emergence to Knee High



Grubs



Chafer Grub Japanese Beetle Grub True White Grub

White Grubs



Brown Stink Bug



Slug



Wireworm



Common Stalk Borer

| Corn Growth Stage | | | | | | | | | | | | | |
|---|----|----|----|----|-----|-----|----|----|----|----|----|----|----|
| VE | V2 | V4 | V6 | V8 | V10 | V12 | VT | R1 | R2 | R3 | R4 | R5 | R6 |
| Seedcorn Maggot | | | | | | | | | | | | | |
| White grub | | | | | | | | | | | | | |
| *Flea beetle | | | | | | | | | | | | | |
| *Bill bug | | | | | | | | | | | | | |
| Slug | | | | | | | | | | | | | |
| Wireworm | | | | | | | | | | | | | |
| Black Cutworm | | | | | | | | | | | | | |
| Common Stalk Borer | | | | | | | | | | | | | |
| Armyworm | | | | | | | | | | | | | |
| Brown Stinkbug | | | | | | | | | | | | | |
| Corn Rootworm Larvae | | | | | | | | | | | | | |
| European Corn Borer 1 st generation | | | | | | | | | | | | | |
| *Southwestern Corn Borer 1 st generation | | | | | | | | | | | | | |
| Corn Leaf Aphids | | | | | | | | | | | | | |
| Corn Rootworm Adult | | | | | | | | | | | | | |
| Japanese Beetle | | | | | | | | | | | | | |
| Grasshopper | | | | | | | | | | | | | |
| European Corn Borer 2 nd generation | | | | | | | | | | | | | |
| Western Bean Cutworm | | | | | | | | | | | | | |
| Corn Earworm | | | | | | | | | | | | | |
| Fall Armyworm | | | | | | | | | | | | | |
| Southwestern Corn Borer 2 nd generation | | | | | | | | | | | | | |

Grain Fill



European Corn Borer 2nd generation



Western Bean Cutworm



Corn Earworm



Fall Armyworm

Pollination



Japanese Beetle



Southwestern Corn Borer Larva

Knee High to Tassel



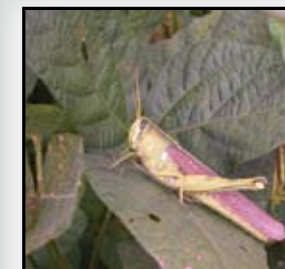
Armyworm



European Corn Borer 1st generation



Corn Rootworm Larva



Grasshopper



Adult Northern Corn Rootworm



Adult Western Corn Rootworm



Corn Leaf Aphids

***Image not shown.**
 Sources: Peairs, F. Colorado State University, www.bugwood.org; Armyworm photos 5364223 and 5361211 (viewed 3/01/10).
 Acknowledgment: We would like to thank Dr. Scott Stewart, University of Tennessee, for granting permission for the reprint of slug and grasshopper images. http://www.utextension.utk.edu (viewed 3/1/10).
 Individual results may vary, and performance may vary from location to location and from year to year. This result may not be an indicator of results you may obtain as local growing, soil and weather conditions may vary. Growers should evaluate data from multiple locations and years whenever possible.
ALWAYS READ AND FOLLOW PESTICIDE LABEL DIRECTIONS. Technology Development by Monsanto and Design(SM) is a servicemark of Monsanto Technology LLC. ©2010 Monsanto Company. SMK030110