

# Soybean

# INSECT CALENDAR



## April - June



Seedcorn Maggot



Wireworm



White grubs



Slug



Black Cutworm larva



Soybean Podworm (bollworm)



Velvetbean Caterpillar



Cabbage Looper

## Soybean Insect Calendar

April	May	June	July	August	Sept.
	Seedcorn Beetle		Green Cloverworm		
	Seedcorn Maggot		Potato Leafhopper*		
	White Grubs		Grasshoppers		
	Wireworms		Bean Leaf Beetle (adult)		
	Slug		Japanese Beetle		
	Cutworms		Margined Blister Beetle (adult)		
			Green Stink Bug, Southern Green Stink Bug, Brown Stink Bug & Redbanded Stink Bug		
			Three Cornered Alfalfa Hopper		
		Soybean Thrips*			
		Soybean podworm (bollworm)			
		Looper			
		Velvetbean Caterpillar			
		Two-Spotted Spider Mite			
		Mexican Bean Beetle*			
		Bean Leaf Beetle			
		Corn Rootworm (adult)			
		Soybean Aphids			

## July - September



Green Cloverworm



Bean Leaf Beetle



Margined Blister Beetle (adult)



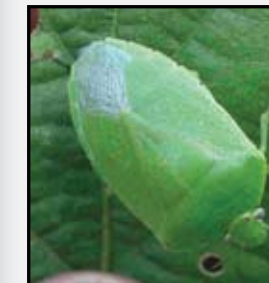
Grasshopper



Japanese Beetle



Three Cornered Alfalfa Hopper (spotted red phase)



Green Stink Bug



Brown Stink Bug



Redbanded Stink Bug

## June - August



Corn Rootworm (adult)



Bean Leaf Beetle (unspotted color phase)



Soybean Aphids



Two-Spotted Spider Mite



Southern Green Stink Bug

\* Image unavailable

Sources: Frank Peairs, Colorado State University, www.bugwood.org (viewed 4/27/10); Wireworm image 5364575  
Joseph Berger, Bugwood.org (viewed 4/27/10); slug image 5386116  
Clemson University - USDA Cooperative Extension Slide Series, Bugwood.org (viewed 4/27/10); Velvetbean Caterpillar UGA1235190  
Charles Olsen, USDA APHIS PPD, Bugwood.org (viewed 4/27/10); Cabbage Looper image 5383721  
Johnny N. Dell, Bugwood.org (viewed 4/27/10); Margined Blister Beetle image 5387769  
Johnny N. Dell, Bugwood.org (viewed 4/27/10); Three Cornered Alfalfa Hopper image 5382522  
Herb Pitcher, USDA Agricultural Research Service, Bugwood.org (viewed 4/27/10); Brown Stink Bug image 2134100  
Phillip Roberts, University of Georgia, Bugwood.org (viewed 4/27/10); Southern Green Stink Bug image 4387037

Individual results may vary, and performance may vary from location to location and from year to year. This result may not be an indicator of results you may obtain as local growing, soil and weather conditions may vary. Growers should evaluate data from multiple locations and years whenever possible. ALWAYS READ AND FOLLOW PESTICIDE LABEL DIRECTIONS. Technology Development by Monsanto and Design(SM) is a servicemark of Monsanto Technology LLC. ©2010 Monsanto Company. BSM030110